



City of New Germany

Duckweed

What's that green?

Carver County Water Management Org.

Is your pond or lake covered in green? Naturally, most people assume green on a lake or pond is algae, but often the green on top of your water is duckweed.

Also known as duck's meat or water lentil, duckweed is actually tiny, free floating native plants. The plants are found in clusters of leaves, each with small roots that hang down into the water. It can form thick green blankets on the water's surface which is why it is often mistaken for algae. Duckweed is found in quiet waters of ponds, lakes and streams and will rarely become abundant on waters with frequent wind or lots of wave action.

Looking at the water from a distance, it's hard to tell if its duckweed or algae. Get closer and you will either see tiny individual smooth green dots with little roots forming a mat (duckweed), or a mat of fuzzy algae with no indistinguishable pieces.

Duckweed is an important part of the food web in lakes and ponds, providing food for waterfowl and other birds. It also provides shelter and food for small aquatic bugs which can be seen darting here or there between the root systems. These bugs are then food for fish. By creating a mat on top of the water it keeps algae and mosquito breeding under control, provides shade to keep the water below cool, and even cleans the water. In fact, duckweed is used at many water treatment plants to help purify the water.

As duckweed provides benefits both to water quality and the wildlife many residents enjoy, it should mostly be left alone. On occasion, duckweed can get too thick, and shade out larger, submerged plants. Yet, it reproduces so rapidly that effective control can be difficult. So relax and enjoy the green topped water, it means your lake or pond has life and a self-cleaning capability.

ANNUAL FIRE DEPT SOFTBALL TOURNAMENT -AUGUST 1, 2, 3 2025

Softball games all weekend, amazing burgers, cold refreshments, all proceeds benefit the Fire Department! This is a great family event, park for the kids to play in. There are other activities for the children, much fun for the entire family! Come and have a cold refreshing beverage, burger and socialize! Many Fire Departments from all over will be participating in the softball games. This is a great event for everyone, show your support for firefighters! If you would like to volunteer to work, Please call Devin Lilienthal 320-492-0813, volunteers are always needed. New Germany Fire Department is accepting applications for Fire Fighter! Support your community and join a great group!

Relief Association is who manages the charitable gambling in New Germany, they are always giving back. Not only do they give scholarships, they donate to other organizations. They also, donate funds to the New Germany Parks, and Fire Department project/equipment fund. If you would like more information on the scholarship program please contact Dan Mielke 952-212-8922. Thank you Relief Association!

Monthly Newsletter

June 2025

☺ City/Office Staff

SHERIFF 911

Mayor—Shirley Jaeger
952-353-2208

Council Members:

Tom Mielke

952-353-2526

Kevin Grove

Kev-
in.newgermany@gmail.com

Paul Roepke—

612-209-4084

Lorn Herrmann

952-240-2315

City Clerk—Treasurer Twyla
Menth

Office Assistant—Leann
Goede

Public Works- Chris Barlau

Water/Sewer— People Ser-
vice

Lee 612-636-2434

Jerry 612-644-0139

Janitor—Tony Burke

Hall Rental-952-353-2488

Meetings -

Council—1st Tuesday and

3rd Tuesday 7:00

Fire Dept.—1st Mon 7:00

Planning Commission—1st &
3rd Tues 6 PM, when need-
ed.

School is soon out and the children will be out and about. City Parks are where the kids enjoy playing, please be on the look out by these areas for children crossing the street, or a ball rolling into the street area. Abide by stop signs, speed limit, be safe..

Reminder—alley weight limit is 3 ton, 10 MPH speed limit, no garbage trucks, no delivery trucks in alley. Park Street E, is not a truck route.

Brush Site

The Mayer site information is listed below. The hours of operation for the Mayer site are:

April—Nov.

Wednesday 5PM—8PM

Saturdays 8AM—Noon

Dec.—March

Saturdays 8AM—Noon

They also accept automotive batteries, clothing, cans, glass bottles, scrap metal, used motor oil, oil filters, antifreeze, and more.

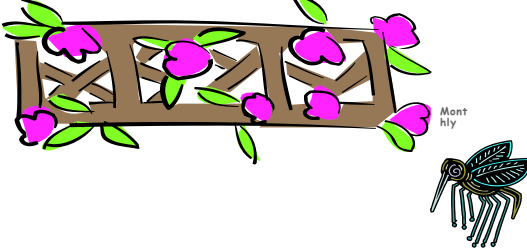
Contact Carver County Environmental Services (952) 361-1800

Compost bin is located the city shed on 250 State Av N., grass clippings and leaves only, NO BRUSH!

Garbage Pick—up

Reminder—If the Holiday falls on a weekday and your service day is on or after the Holiday, your service will be delayed one day. Call the City for any garbage changes.





JUNE 2025



300 Broadway Street East
PO Box 177
New Germany, MN 55367-0177

Phone: 952-353-2488
ngcityhall@gmail.com

Office Hours
Mon through Thursday
8:30 am—4:30 pm
Closed Fridays



FIRE WORKS

Be Safe this 4th of July and use caution with any type of firework. Remember anything that goes into the air and explodes is illegal in Minnesota. BE CAREFUL and BE SAFE!

City office is closed on June 19th, & always closed on Friday's. Check the office door for any additional closed dates, and or out of office dates.



NOTICE RESIDENTS

Please remember flushable wet wipes should not be flushed. Do not pour fats, oil or grease (FOG) down the drains. Do not flush non biodegradable items down the drain, such as cigarette butts, dental floss, disposable diapers, bandages, cotton balls and swabs, female products, medications and like items. Do not put household chemicals down the drains, such as paint and strong cleaning products. Basically the only thing you should be flushing down

| Sun | Mon | Tue | Wed | Thu | Fri | Sat |
|-----|-----|---------------|-----|----------------------|--------------|-----|
| 1 | 2 | 3 Council | 4 | 5 Roll inn starts | 6 Closed | 7 |
| 8 | 9 | 10 | 11 | 12 RECYL | 13 Closed | 14 |
| 15 | 16 | 17 Council | 18 | 19 Closed Holiday | 20 Closed | 21 |
| 22 | 23 | 24 | 25 | 25 RECYL | 27 Closed | 28 |
| 29 | 30 | 1 Council | 2 | 3 | 4 Closed | 5 |
| 6 | 7 | 8 | 9 | 10 | 11 | 12 |

Sheriff number to call in complaints - all calls use 911

For all dog calls you may request a CSO (community service officer), during day time hours; barking dog, dog running at large, they have the authority to ticket offenders. All other calls please call the Sheriff Dept; noises, suspicious activity, traffic violations or fireworks, call the 911 for any of the above. **You do not need to leave a note or phone message at the city office unless you want to file a formal complaint.** The Sheriff or CSO can respond to an incident while it is happening instead of hearing about it later. You can request your name be withheld. Some issues need to be dealt with while they are happening for better results. Remember—Dog issues you can request a CSO Officer (community service officer), they specifically deal with animal control issues.

Reminders

- Lawns—grass, & vegetation cannot be taller than 6 inches in height. Grass cannot be blown on city streets, keep it in your lawn.
- Garbage services/recycling—everyone has to have it, call the city with any account or broken cart issue.
- Sump pumps must drain to your yard or to the curb in summer months, Must not be connected to your sump pump.
- House numbers must be visible. Sheds (under 200 sq ft) , fences, & retaining walls require zoning permits.
- Reminder—recreational fires are to be in a 3 x 3 area.

National Night Out— August 5— 6:30 PM If you have ideas please share!

ROLL INN Car show every Thursday evening starting on June 5—September 25, 2025.

DUTCHMEN BALL GAMES—Make sure and check out the Dutchmen ball schedule and enjoy a game under the new lights!

Dutchmen Baseball schedule— <http://crvlbaseball.com/schedule>