



CITY OF NEW GERMANY

City Staff

Mayor-Steve VanLith
353-2571

Council Members -
Shirley Jaeger
353-2208

Thomas Mielke
952-353-2526
Ty Turnquist
952-353-2456
Kevin Grove
Kevin.in.newgermany@gmail.com

City Clerk –
Treasurer
Twyla Menth

Office Assistant
Jane Diers

Water/Sewer—
People Service

Public Works -
Steve VanLith

Commercial Club
Shirley Jaeger
Steve VanLith
Eric Roepke
Bruce Johnson
Ty Turnquist
Mark Strehlke
Steve Mielke
Meets the 4th Monday as needed.

Planning Commission
Ty Turnquist
Lois Jopp
Kevin Grove
Julie Aarsvold
Meets the 4th Tuesday as needed.



Keep Ponds Healthy

In residential developments, you will often see small ponds throughout the neighborhoods. These are stormwater ponds, created to collect stormwater runoff which is rainwater or snowmelt that runs off streets, parking lots, rooftops and compacted lawns.

The ponds are designed to look like natural lakes or wetlands, and as such are often mistaken for landscaping features. But they are there to prevent flooding and collect stormwater and pollutants like heavy metals, sediment, bacteria, oils and nutrients. The ponds collect and filter the water, keeping pollutants out of lakes and rivers.

The filters—Each pond has a “buffer” around it. A buffer is an area of plants surrounding the pond, usually about 10 feet wide but sometimes up to 30 feet wide. This buffer strip slows down and filters stormwater running off yards before the water reaches the pond. Removing the native plants in the buffer strip or mowing straight down to the pond gives polluted water direct access to the pond. Protect the buffer and you protect the pond.

But why does it turn green? Two factors can cause green ponds. The first is related to nutrients, specifically phosphorus, which causes algae blooms. These ponds are designed to capture pollutants, such as phosphorus, so they will rarely be pristine, but homeowners around the ponds can unknowingly increase phosphorus in ponds. See below for tips on how to keep phosphorus out of ponds.

Another green factor is duckweed (photo to right) is often mistaken for algae. Duckweed is a tiny, free floating green plant that can form thick blankets across a pond. Duckweed has an important food source for birds and wildlife and it has such good water filtering capabilities it is used by water treatment plants. So, if its duckweed greening your pond, relax and enjoy the wildlife and water treatment.

Homeowner tips—Do not dump grass clippings or leaves in the pond or near storm drains. This will cause algae blooms. Sweep or rake up any leaves from curbs and storm drains to keep them from washing down. Do not pour chemicals, oils, etc. in or near the pond or allow any household or automotive chemicals to drain into the storm drain. Use biodegradable soaps for outdoor cleaning. Sweep up grit and debris on driveways and sidewalks, do not hose it into the street. Capture stormwater runoff from roofs and driveways in rain barrels or raingardens. Pick up animal waste and dispose of it in the trash.

Mosquitos—If ponds are functioning correctly, it limits breeding sites for mosquitoes. Additionally, treatment for mosquitoes is provided by the Metropolitan Mosquito Control District. The Metropolitan Mosquito Control District is responsible for protecting the public from disease and annoyance caused by mosquitoes, black flies, and ticks. The district controls mosquito populations by targeting the larval stage using various control materials including Bti, a bacteria that inhibits larval growth. If mosquitoes are a concern, the district has an interactive map where residents can log in and see how and when stormwater ponds have been treated for mosquitoes. Visit www.mmcd.org and click on “Services” and then “District maps.”

SPRING CLEAN UP

New Germany city resident’s—Clean Up Day May 13, 2023

@ the City Shed from 7:00AM to 11AM.

You must be a resident within the City limits of New Germany.

- No farm or tractor tires, hazardous Waste, Fluorescent bulbs, auto batteries—these can be taken to COLOGNE on 5/20/2023 Cologne Public Works Building, Cologne.

Please call if you need help getting items to City Shed.

Camden is not participating in clean up day. New Germany city residents only.

| | |
|--|------|
| Car Tires (rims accepted) | \$3 |
| Semi Tires | \$8 |
| Residential Electronics (TV’s & Computer monitors) | \$10 |
| LG TV | \$20 |
| Appliances | \$10 |

Carpet Rolls, Recliners, chairs, sm furniture \$5

| | |
|------------------------|------|
| Sofa/Couch | \$10 |
| Mattresses | \$10 |
| Box Spring | \$10 |
| Hide a beds | \$10 |
| AC Unit/Water Softener | \$20 |

Misc. garbage items No chg.





MEMORIAL DAY

The City Hall will be closed Monday, May 29, 2023 for Memorial Day.

2023 New Germany American Legion Memorial Day Service
 The New Germany American Legion will be honoring deceased veterans on Memorial Day at local cemeteries with honor guard, rifle squad and taps.
Memorial Day Schedule
 9:00 Crow River Cemetery
 9:30 St. Marks in New Germany
 10:00 St. Johns in Hollywood
 10:20 Methodist in Mayer
 10:30 Zion in Mayer
 11:00 Carver County Veterans Memorial with a program

Every year in May your sewer portion of your utility bill is refigured and is based on your water usage from the Jan/Feb/March. This is a fixed fee for the next 12 months. The sewer base rate is \$29.20 and it is billed per 10 gallons at \$0.02258, or \$22.58 per 1,000 gallons. This will reflect in your May utility bill.

New Germany

300 Broadway Street E
 PO Box 177

952-353-2488 Office
 952-353-8021 Fax
 ngcityhall@gmail.com
 Building Insp.
 763-479-1720
 Hall Rental Info
 952-353-2488

OFFICE HOURS

MON thru THURS
 8:30-4:30

Out of office days are always posted on the office door.



JUNK & BLIGHT ISSUES IN THE CITY

Yes, it is that time of the year again.

After the snow melts things are uncovered that we forgot about. Inspections are being done & letters will be going out. If needed, the city will tow, hire a crew to clean up or do whatever is necessary to clean up our city. Any clean up that needs to be done by the city, or hired out, will be your financial responsibility and if you choose to not pay the bill we will assess the amount onto your taxes in November. Let's be proud of our city—your home is your responsibility.

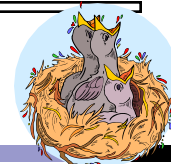
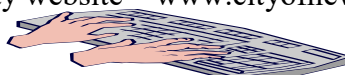
Use Spring Clean Up Day on May 13 to dispose of most of your junk items. Please call the City Hall if you have any questions or need help 353-2488.

Mayer brush site is open Wednesday 5-8 pm, Saturday 8-12pm.

Compost bin is at City Shed located on State Avenue N (by MN Inboard).



City of New Germany is on Facebook, City website—www.cityofnewgermany.com
 Hall Rental information—952.353.2488



The recent warmer temps have melted quite a bit of snow. If you haven't already, head out and pick up that pet waste that might have been piling up.

Any piles of pet waste left on your lawn are subject to unsuspecting feet or worse.

When left on the ground, pet waste doesn't disappear, rain and snow-melt wash it off lawns and other surfaces and into storm drains which send it directly to lakes, rivers or ponds.

Pet waste contains A LOT of bacteria and parasites that are a health threat to people and wildlife. Plus the pet waste adds nutrients to the water, reducing oxygen available for aquatic life and leading to more algae.

So pick up that pet waste before it washes away. Remember to always scoop!!

MAY 2023

Sun Mon Tue Wed Thu Fri Sat

| | | | | | | |
|----|---------------------------------|---------------|----|---------------------|---------------------------|--------------------------|
| | 1 FD | 2 Council | 3 | 4 Recyl cart | 5 | 6 |
| 7 | 8 | 9 | 10 | 11 | 12 | 13 Spring clean up |
| 14 | 15 | 16 Council | 17 | 18 Recyl cart | 19 | 20 |
| 21 | 22 | 23 | 24 | 25 | 26 | 27 |
| 28 | 29 Memorial Day Closed | 30 | 31 | 1 | 2 GAR- BAGE DAY! | 3 |

SCOOP THE POOP!



IN SOME URBAN AREAS, AS MUCH AS 20% OF WATER-BORNE BACTERIA CAN BE TRACED TO DOG POOP.

EWWWW!